



# Ministry of Health

**Khamouane and Bolikhamxay Provincial Health**

**NT2 Public Health Program**

*Overview*

**11 December 2013**

# **NT2 PROJET - AN EXAMPLE OF PPP**

**PUBLIC PRIVATE PARTNERSHIP**

**GOVERNMENT OF LAO PDR**

**AND**

**NT2 PROJECT**

# DEVELOPMENT

## The Social Development Program

*Health*

is an integral part of

*Development*

# PREREQUISITES

1. Health Impact Assessment
2. Public Health Action Plan
3. Continued Relevance
4. Periodic Monitoring
5. Bringing in Necessary Changes

# PRINCIPLES

1. Strengthening the existing systems
2. Sustainability
3. Population Perspective
4. Balanced Curative and Preventive Approach

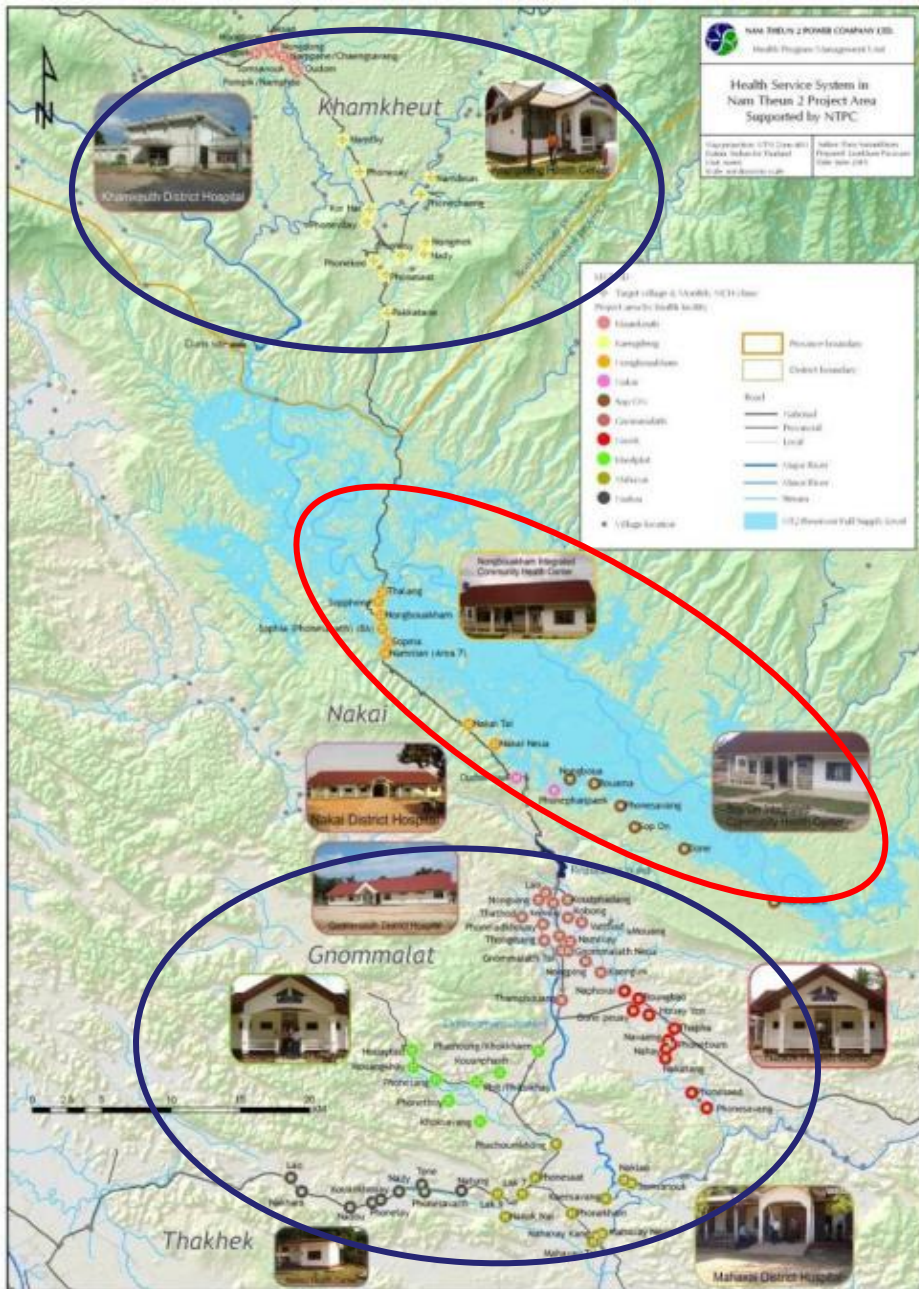
# STRATEGIES

1. Primary Health Care
2. Integrated Outreach Approach
3. Focus on empowering communities  
(Health Awareness & Education)
4. Built in Evaluation (S&M)

# INGREDIENTS

1. Continuity and Degree of Reliance
2. Dedicated Team
3. Vision
4. Management Support

# THE NT2 PUBLIC HEALTH PROGRAM



## The Resettlement Health Program

- 1 District Hospital
- 2 ICHCs
- 16 resettlement villages
- Population 9,922

## The Regional Health Program

- 3 District Hospital
- 4 Health Centers
- 77 villages
- Population 47,888



# **FIVE MAJOR AREAS OF INTERVENTION**

1. Infrastructure Development
2. Training and Capacity Building
3. Health Education and Awareness
4. Health Service Delivery Development
5. Surveillance and Monitoring

# TRAINING – CAPACITY BUILDING

1. Primary Health Care (PHC) – all elements of PHC, in particular focus on Maternal, Newborn and Child Health (MNCH)
2. Training of Trainers for Supervision and Support
3. Health care – in particular focus on
  - Uniform and Standard Treatment
  - Maternal, New Born and Child Health
  - Emergency Obstetric Care (EOC)
  - Diagnosis and treatment of respiratory infections
  - Sexually Transmitted Infections (STIs) including HIV/AIDS
  - Laboratory
4. Health prevention and promotion – health education and awareness
5. Routine Monitoring System / Health Databases

# TRAINING – CAPACITY BUILDING

<b>Activity</b>	<b>No. of Sessions</b>	<b>No. of Participants</b>
Training at Village level	138	3,448
Training at District and Health Center level	250	3,344
Meeting at village level	276	9,051
Meeting at District and Health Center level	386	7,246

# HEALTH EDUCATION & AWARENESS

The activity is carried out through

- Monthly Integrated Outreach Program implemented by health center and district MNCH staff in the target villages
- Any opportunities at the time of patient visit health facility
- Special education/awareness programs – STIs including HIV/AIDS and smoking harms

Activity	No. of Sessions	No. of Participants
Health education	2,459	213,805

# HEALTH SERVICE DELIVERY DEVELOPMENT

Monthly Integrated Outreach Program was first launched on 1<sup>st</sup> June 2006 and further extended to all project villages

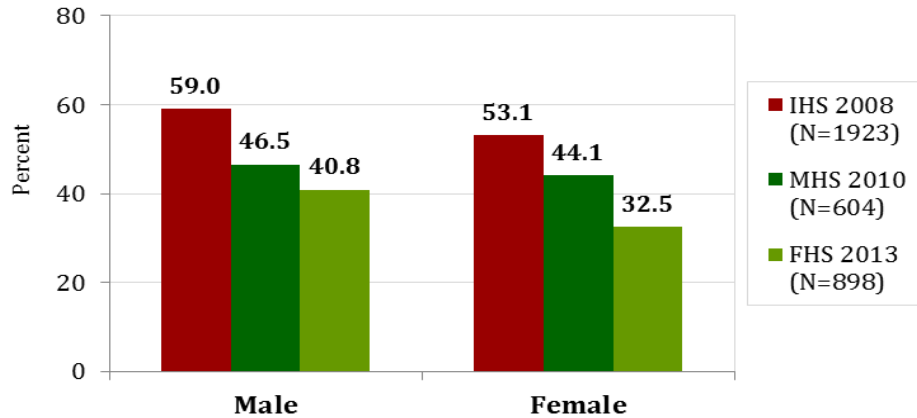
Activity	No. of Sessions
Monthly Integrated Outreach Program	7,428
Quarterly On Site STIs Clinic	115

# SURVEILLANCE AND MONITORING

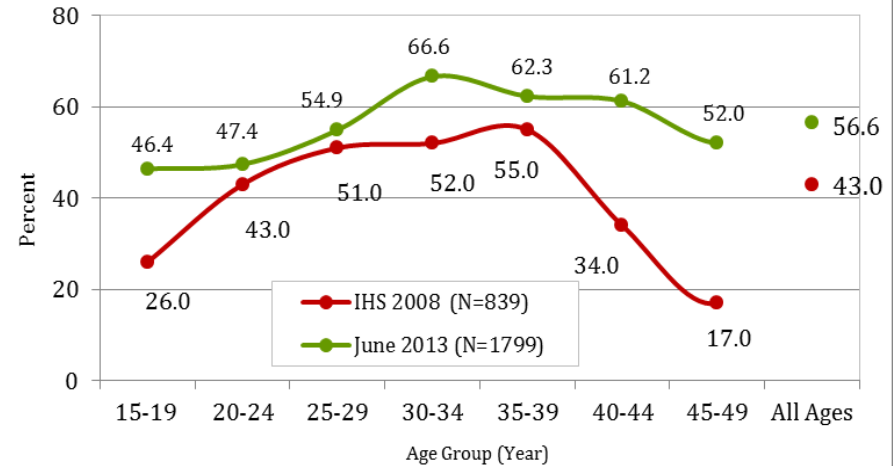
- Strengthening and implementation of existing surveillance systems
- Development of Health Information System based on routine data collection
- Public Health and Health Facility Databases for each Health Facility, providing information for National HMIS, including MDGs
- Now replicated in non- project areas as well (Bolikhamxay and Bokeo provinces)
- S&M helped in strengthening of health staff at all levels using information technology (Computer, Anthro, Epi Info, Team Viewer...)
- Monitoring of seasonal, emerging and re-emerging diseases

# MAJOR ACHIEVEMENTS

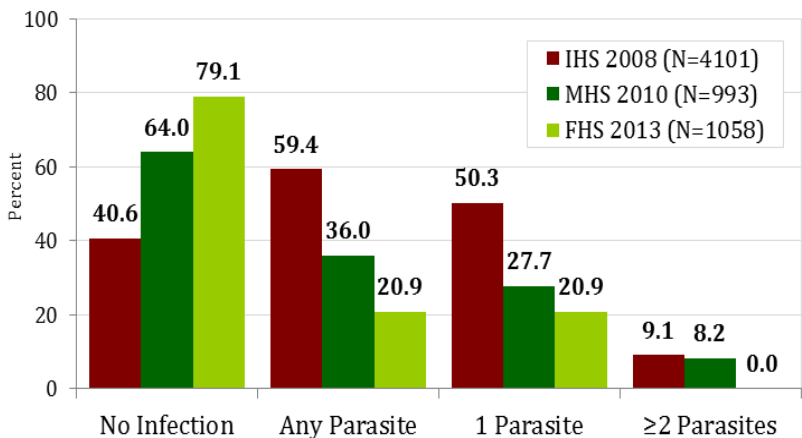
### Nutrition Status (Stunting) of 5-19 Surveyed Population in Nakai WHO Anthro Plus Program



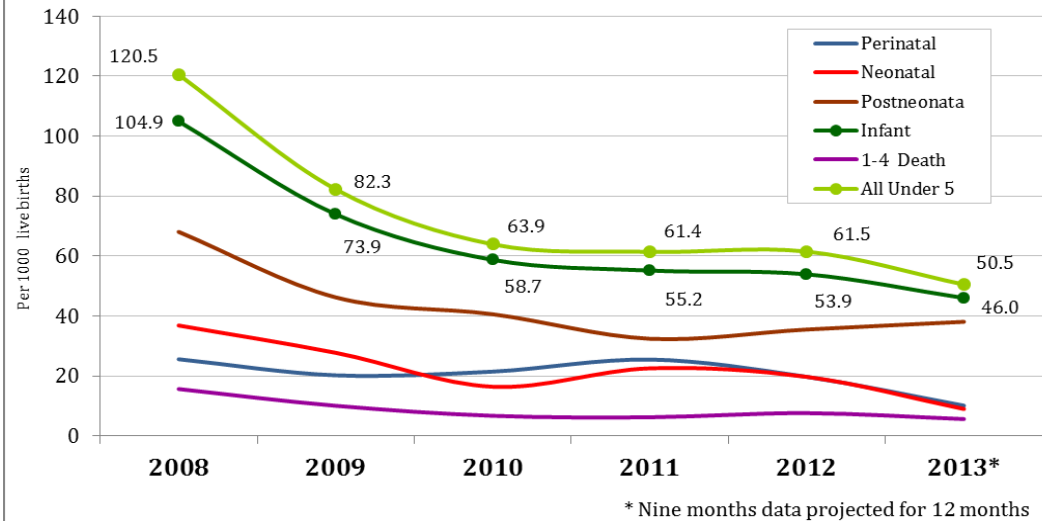
### Contraceptive Prevalence Rate by Age Groups Nakai Resettlement Areas - IHS versus June 2013



### Multiple Parasite Infections Nakai Surveyed Population



### Childhood Mortality in The Project Area



# THE MILLENNIUM DEVELOPMENT GOALS - 2015

MDG	NTPC INITIATIVES	INDICATOR
<b>1. Eradicate Extreme Poverty and Hunger</b>	<i>Measurable Poverty reduction by 2013 through Livelihood Programs Nakai District leaving the status of one of the 40 poorest Districts of Laos</i>	Below Normal Body Weight: Male: From 9.5% to 6.7% Female: From 18.4% to 12.5%
<b>2. Universal Primary Education for All</b>	<i>Primary schools in all Resettlement Villages, encouragement to parents for higher enrolment</i>	Cannot read: Aged 15-24 From 28.6% to 12.4%
<b>3. Promote Gender Equality And Empower Women</b>	<i>Gender program, training for awareness and services</i>	Contraception (15-45) From 43% to 57%
<b>4. Reduce Childhood Mortality</b>	<i>Growth monitoring, nutritional advice and immunization through monthly integrated outreach/ MCH clinics in all villages, birth registers, kindergarten meals program, health service provision for the sick</i>	Infant Mortality: From 105 to 46/1000 live births  Imm. Coverage at 2 Year 97 % for the resettlement areas



# THE MILLENNIUM DEVELOPMENT GOALS - 2015

MDG	NTPC INITIATIVES	INDICATORS
<b>5. Improve Maternal Health</b>	<i>Improved health facilities, Essential Obstetric Care, birth registers, supervised delivery, Antenatal and postnatal care, family planning and nutritional programs</i>	ANC 4 visits Institutional Delivery Family Planning
<b>6. Combat HIV/AIDS, Malaria and Other Diseases</b>	<i>STIs/HIV/AIDS program for public and high risk individuals.            Vector Control for malaria and Infectious Disease Control through development of health service delivery. Awareness and education to all</i>	No evidence of excessive increase of HIV/AIDS in the project area Elimination of Malaria Lower hospitalization rates
<b>7. Ensure Environmental Sustainability</b>	<i>Clean potable water and modern toilets for all resettled villages and in the downstream area. Restaurant Hygiene and hand washing program in municipalities. Waste disposal, awareness and education on the concept</i>	Intestinal Parasites No Parasite in Stool From 41% to 79%
<b>8. Develop a Global Partnership for Development</b>	<i>Greater participation and consultation with the communities for all development programs. Health Checks/Surveys, integrated outreach/MNCH program, health education program and gender issues</i>	Outreach Program in all 93 project villages in collaboration with the local communities

# WHAT ARE WE LEAVING BEHIND

- Better Housing
- Clean Water
- Adequate Sanitation
- PHC for all
- Healthier populations
- NT2 Health Program is on the World Map
- ✓ WHO training Program (2010)
- ✓ Lesotho Highlands Water Project (Phase II)
- ✓ A Number of Publications

## **A set of materials:**

1. The NTPC Public Health Program Methodology - PHC Approach
2. Monthly Integrated Outreach Program
3. Health Management Information System
4. Nakai Resettlement Health Surveys
5. Monitoring Heights and Weights
6. Health Education and Awareness

# HANDING OVER CHALLENGES

- Responsibility of Sustainability
- To Address Remaining Health Problems
- To Continue to Improve the Services
- Help other areas to develop similar programs – WMPA and other non-project areas